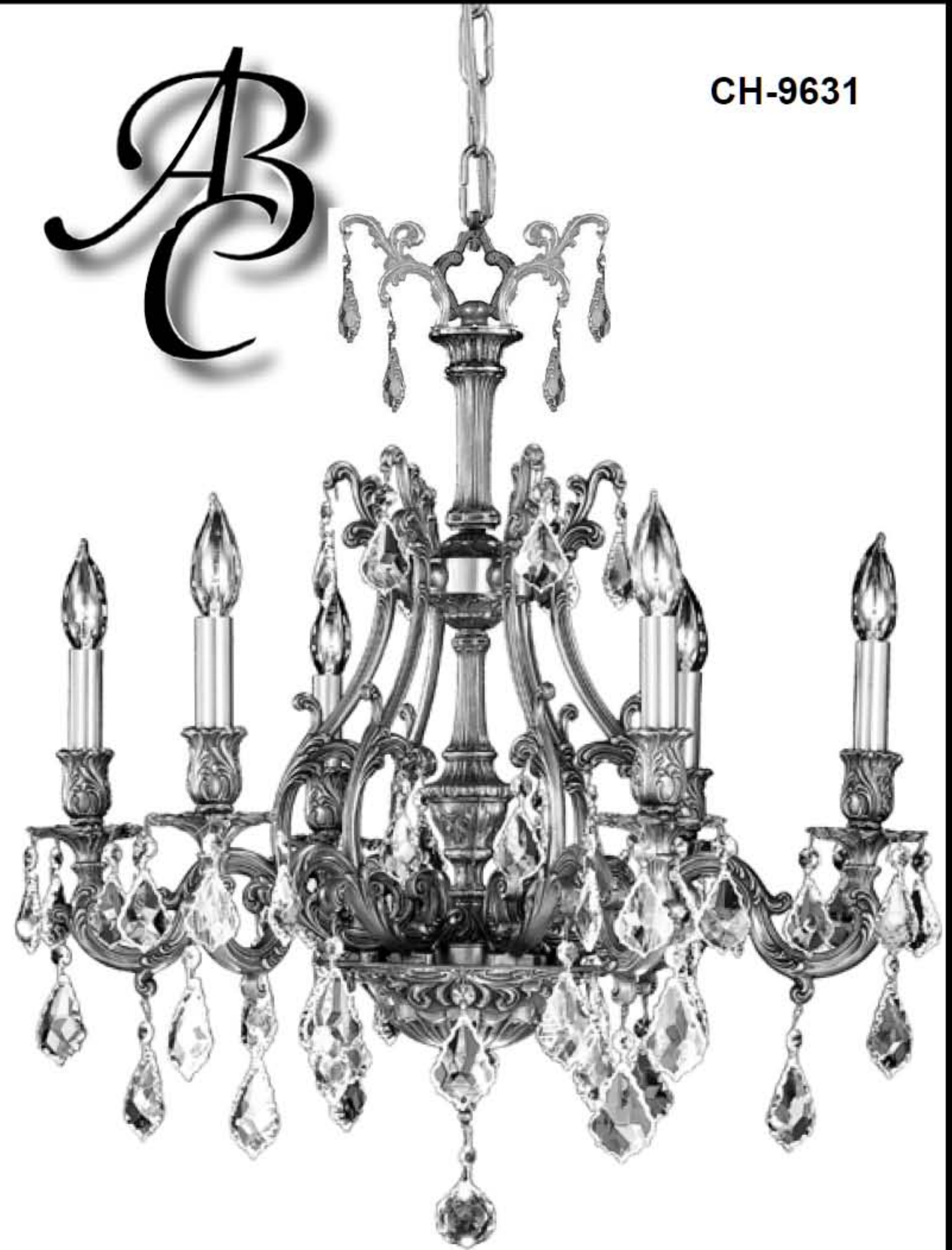


AB

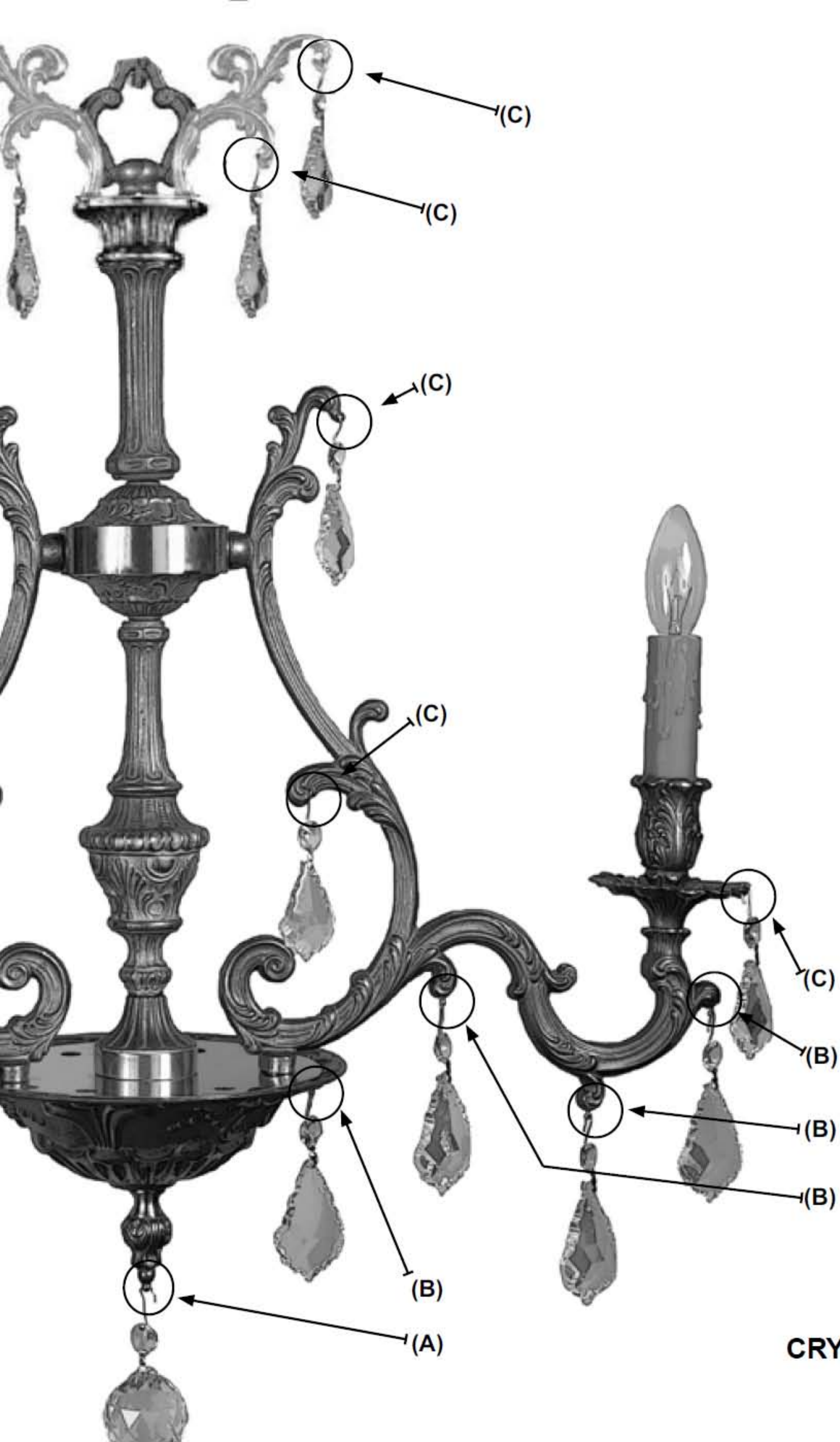
CH-9631



American Brass & Crystal

835 Lehigh Avenue
Union, N.J. 07083
Toll Free (877)465-5617

www.abclighting.net



CRYSTAL TRIMMING DIRECTIONS:

Begin trimming chandelier after all the electrical connections have been made, the lights have been tested and the chandelier is in good working order.

Begin dressing Alphabetically

Do not unwrap the next crystal section until the proceeding section is complete

Step 1: Package (A) Attach the ball to the (finial).

Step 2: Package (B) Attach (6-B) crystals to (holes in bottom cover).

In order: Attach (6-B) crystals to the (back of arms)

Attach (6-B) crystals to the (middle of arms)

Attach (6-B) crystals to the (front tip of arms)

Step 3: Package (C) Attach (4-C) crystals to each (bobeche on arms)

Attach (6-C) crystals to lower hole on (back of arms)

Attach (6-C) crystals to (top of arms)

Attach (6-C) crystals to top hole (crown).

Attach (6-C) crystals to bottom hole (crown).

PLACEMENT	QUANTITY	DESCRIPTION
A	1	1-14MM JEWEL + 40MM BALL
B	24	1-14MM JEWEL + 2.5" PEND.
C	48	1-14MM JEWEL + 2" PEND.

CRYSTAL PACKAGE _____ PIN COLOR _____ INITIALS _____